

# Leading Edge Digital – getting you online

EXPERT PACKAGE



You're running a business, but you need more than just an online presence to stay ahead of the competition. Leading Edge Digital's Expert Pack includes the services, tools, and experts to design and develop a custom e-commerce website optimised to drive conversions and sales. Our professional services and industry expertise are offered at competitive rates, whilst offering unrivalled ongoing support throughout the process.

**Explore how Leading Edge Digital can transform your business**



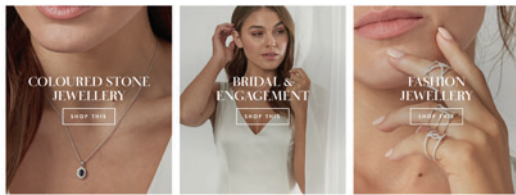
# LE DIGITAL EXPERT

www.austrianjewellerywarehouse.com.au

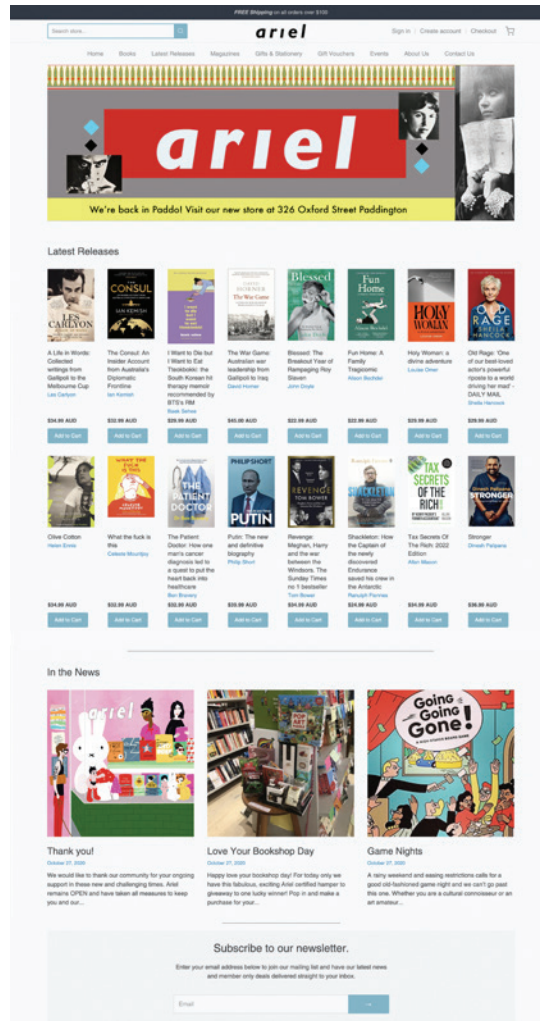
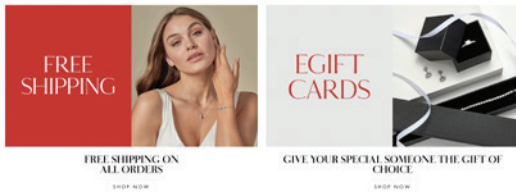
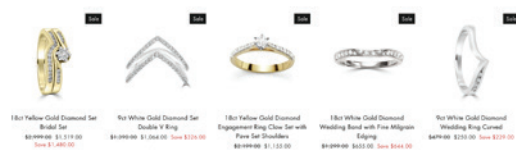


## AUSTRALIAN JEWELLERY WAREHOUSE

The Australian Jewellery Warehouse offers a wide array of delicate and sophisticated jewellery from around the world at cost-effective prices. Our impressive merchandise collection, stored here in Australia, is designed to suit all tastes and budgets.



## ENGAGEMENT & BRIDAL



www.arielbooks.com.au

Our new and improved digital services are designed to suit busy small business owners like you and provide support, no matter where you are in your e-commerce journey.

### From basic websites to expert Shopify training

Our expert Shopify specialists will work on a comprehensive 3-month training plan to help you gain essential knowledge and confidence in online shopping.

### From hands-off website development to one-on-one support

You can plan and choose services you need help with every month based on your goals and our dedicated support team will guide you in your e-commerce journey.

### From generic reports to custom dashboards and insights

Get detailed monthly billing invoices and one-on-one report sessions with our experts breaking down your custom dashboard with insights into your website traffic and performance and actionable next steps.



## //An e-commerce solution that gives you more value

OLD	NEW
Leading Edge Web Services	Leading Edge Digital
Tailored Plan - \$499/month	Expert Plan - \$699/month
*min 12 months required	*min 6 months required
*12-month renewal for \$499	* 12-month renewal for \$399
<b>Inclusions:</b>	<b>Inclusions:</b>
Shopify Basic subscription	Shopify Standard subscription (up to \$400+ savings every month on fees and 5 extra staff accounts)
Domain registration	Domain registration
24/7 Shopify support	24/7 Shopify support
Basic product upload	Product upload with SEO optimisation and meta tagging
2 x training sessions during onboarding	6 x training sessions during onboarding
Monthly product promotions	Monthly product promotions
	Monthly in-depth e-commerce report covering web traffic analytics and site performance audit
	SEO optimisation
	6 hours of one-on-one support on your preferred services including web enhancement, product feed optimisation and advanced Shopify training
	Access to LE Digital, a community where you can ask and contribute on all e-commerce topics
	<p><b>COMING SOON</b> - Access to Curator, an all-in-one e-commerce solution designed by Leading Edge.</p> <p><b>It allows you to:</b></p> <ul style="list-style-type: none"> <li>• Import product feeds</li> <li>• Discover new trending products from a range of suppliers</li> <li>• Dropship products</li> <li>• Set competitive prices</li> <li>• Keep track of inventory</li> <li>• Save hundreds of hours on admin tasks</li> </ul>

### To find out more, contact

Leah McCarthy, Head of Memberships, at +61 2 8732 9697 or [ledigital@leadingedgegroup.com.au](mailto:ledigital@leadingedgegroup.com.au)

